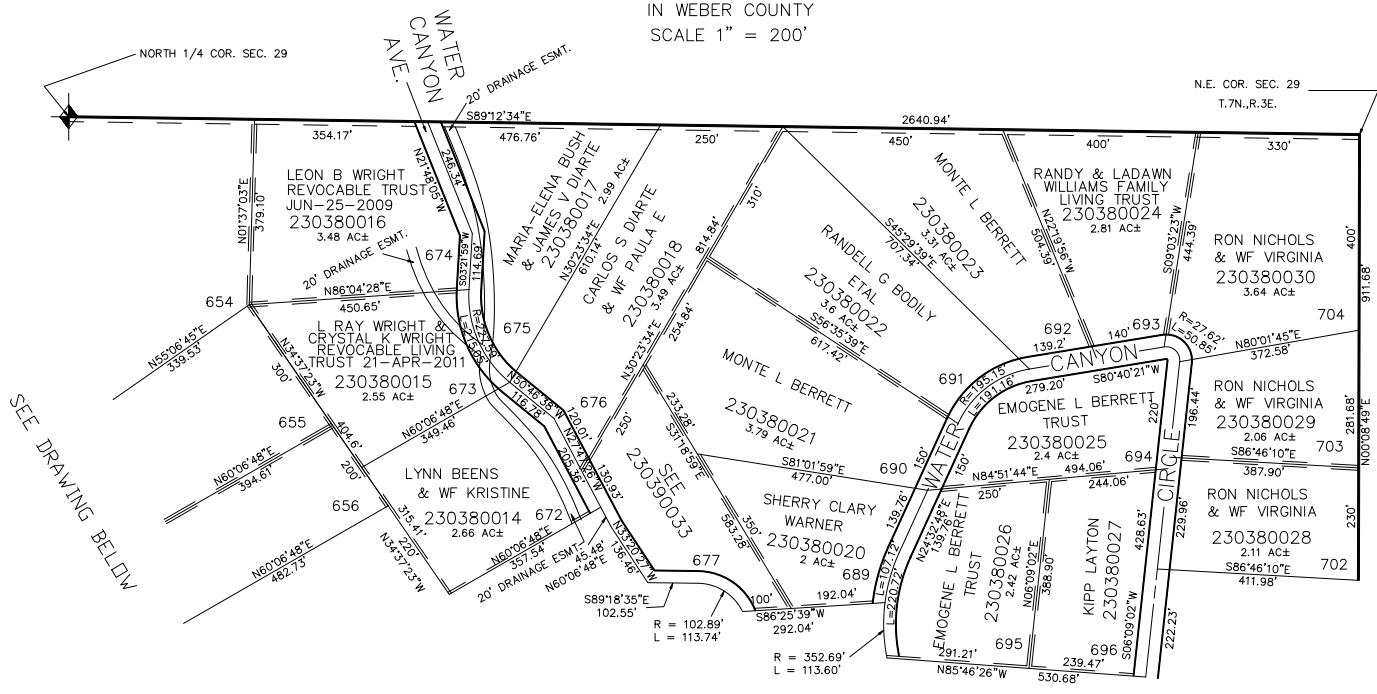


TAXING UNIT: 520

PART OF SEC. 29, T.7N., R.3E., S.L.B. & M.  
**EVERGREEN PARK SUBDIVISION NO. 1**  
 LOTS 551-552, 599-602, 650-656, 672-677, 689-696, 702-704

IN WEBER COUNTY  
SCALE 1" = 200'

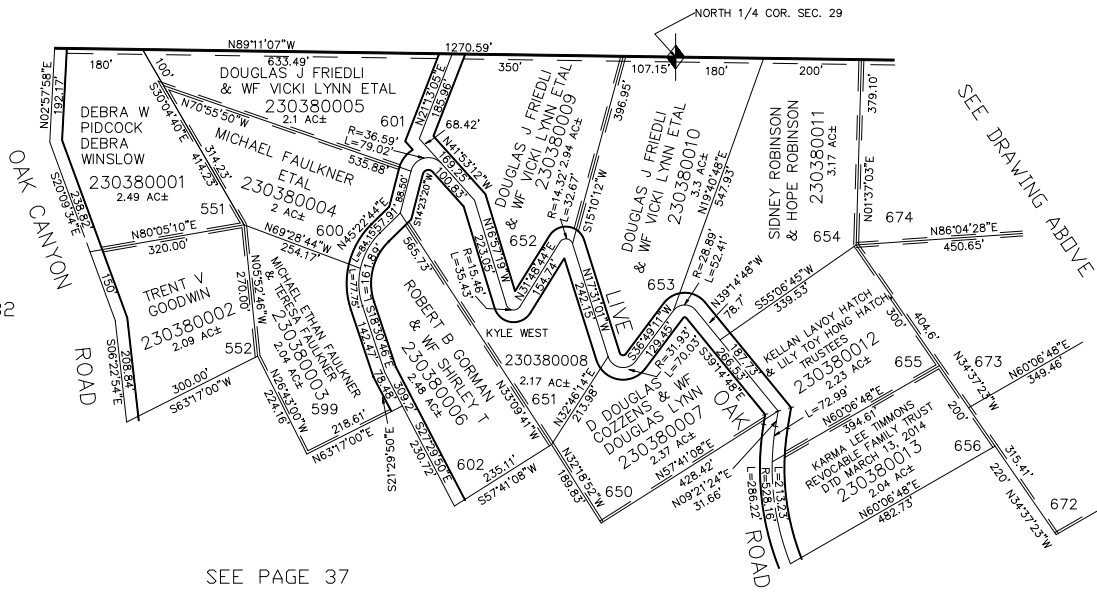


SEE PAGE 39

ALL DASHED LINES SHOWN ON LOT LINES ARE 10' UTILITY EASMENTS UNLESS OTHERWISE NOTED.

ALL ROADS ARE PRIVATE R.O.W.'S

SEE PAGE 32



SEE PAGE 37

FOR COMPLETE ENG DATA SEE ORIGINAL DEDICATION PLAT IN BOOK 13, PAGE 56 OF RECORDS.